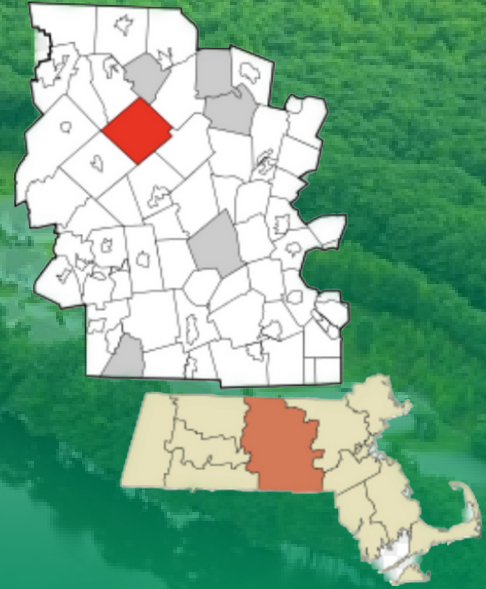


Community Profile



History and Origins

Incorporated in 1767 out of land originally called the "Northeast Quarter" of Rutland, Hubbardston has functioned as an independent New England township for over 250 years. Granted in a charter to Thomas Hubbard, early settlers cultivated the area starting in 1737. Hubbardston retains much of its colonial identity today across the 42 square miles and bit over 4,300 year-round residents who call this historic town home.

Character and Governance

Nearly all of Hubbardston's landscape remains pastoral and pristine. Wetlands, woodlands, rolling hills and family farms maintain the iconic rural scenery that epitomizes small town New England. This preservation mindset also manifests in thoughtful development balanced with respect for history. Governed by traditional town meetings and committees, local decision-making emphasizes civic participation, prudent budgeting, and sustaining Hubbardston's heritage. The 2024 tax rate stands reasonably at \$11.79 per thousand dollars of assessed valuation to fund essential services.

Public Services

Hubbardston provides dedicated public departments to serve residents. Experienced full-time and part-time police officers use community-based techniques to protect public safety. Similarly, on-call firefighters and EMTs are trained to respond to various emergency situations. Long-tenured Public Works staff adeptly maintain infrastructure and valuable resources. Investments into qualified personnel allow Hubbardston to deliver the quality services a modern community requires without compromising its traditional character.

Incorporated: 1767
Land Area: 42 square miles
Elevation: 993 feet
Public Roads: 85.96
Population:
County: Worcester
Government: Open Town Meeting
FY24 Tax Rate: \$11.79
Town Charter and Bylaws

2024 SELECT BOARD

Jeff Williams, Chair
Katie Young, Vice Chair
Heather Munroe, Clerk
Kris Pareago, Member
Peter Walker, Member



Economic Landscape

From colonial days, agriculture has shaped Hubbardston's landscape and culture. Dairy farms, maple sugaring operations and farm stands keep early livelihoods alive while evolving for contemporary markets. This agrarian orientation fosters community interdependence which manifests in civic participation, volunteer groups and pride in Hubbardston's heritage. While many residents now work in nearby regions, average commutes under 40 minutes provide accessibility. Median owner-occupied home values of \$327,900 reflect high demand for small town living balanced with urban access.

Quintessential Way of Life

Graced with natural beauty, community vitality and rich history, Hubbardston nurtures a cherished New England way of life. With responsive governance, idyllic landscapes and opportunity close at hand, the town sustains its legacy while adapting for new generations. Hubbardston continues on as a beloved rural community for all fortunate to discover its enduring and unmatched charm.

HELPFUL LINKS

