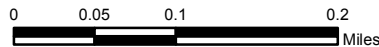
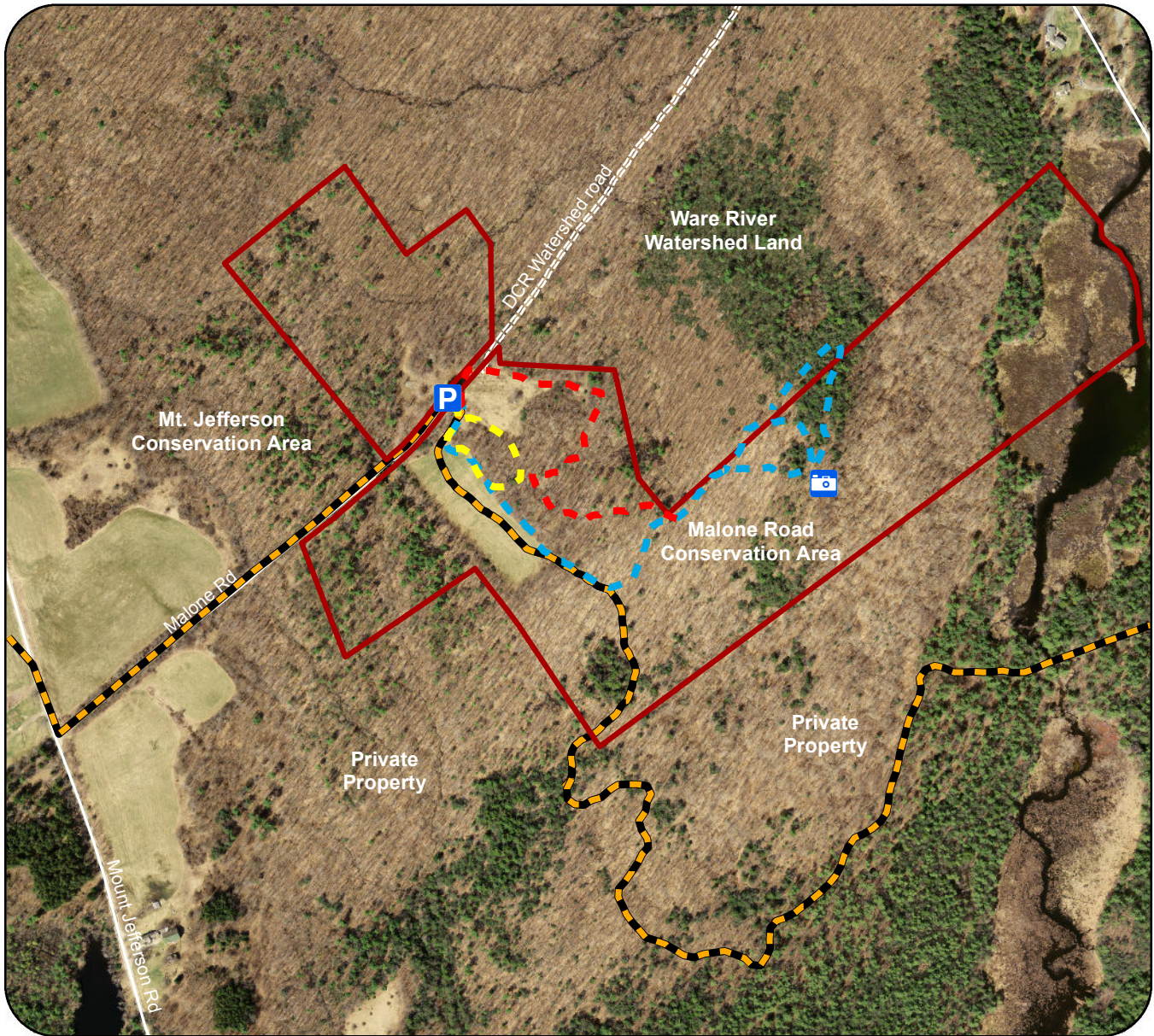


Trail Map

Malone Road Conservation Area



Legend

- - - Between the Pines Trail, 0.4 miles
- - - Dottie Rock Trail, 0.6 miles
- - - Accessible Loop, 0.2 miles
- Snowmobile/Multi-use Trail
- Malone Road Conservation Area Boundary
- Dottie Rock Scenic Overlook
- Plowed parking area

The trails in the Malone Road Conservation Area are maintained for foot travel during the winter. During favorable conditions, they are packed and groomed with space for snowshoeing and a ski track on the side.

A snowmobile corridor trail is provided for access to the Mt. Jefferson/Hubbardston State Forest areas from points east. Look out for traffic on the multi-use trail!

Carry In, Carry Out!

-Hubbardston Open Space Committee